



Runtz

Sample ID: Matrix: Industrial Hemp
Test ID: 5023462
Source ID:
Date Sampled: 10/30/23 Date Accepted: 10/30/23

Farm 15

Results at a Glance

Total THC : 0.50 %
Total CBD : 13 %
Total CBG : 0.036 %
Pesticides : PASS
Water Activity : 0.57 PASS
Percent Moisture : 11.1 % PASS
Total Terpenes : 2.795 % PASS
Microbials : PASS
Metals : PASS
Mycotoxins : PASS



Eric Wendt
Chief Science Officer - 11/2/2023



Runtz

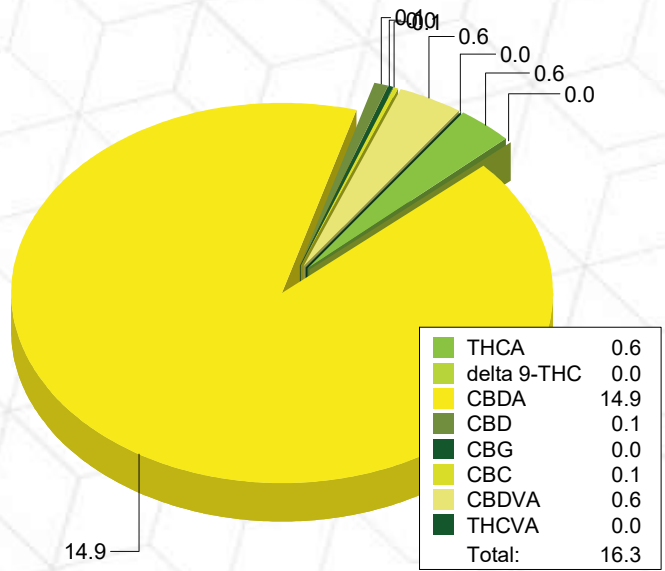
Sample ID: Matrix: Industrial Hemp
Test ID: 5023462
Source ID:
Date Sampled: 10/30/23 Date Accepted: 10/30/23

Farm 15

Potency Analysis

Date/Time Extracted: 10/31/23 10:05 Analysis Method/SOP: 215 Batch Identification: 2344008

	LOQ (%)	% by Wt.	mg/g	Cannabinoids Profile	
Total THC	0.010	0.50	5		
Total CBD	0.009	13	130		
Total CBG	0.0009	0.036	0.36		
THCA	0.0006	0.55	5.5		
delta 9-THC	0.0006	0.015	0.15		
delta 8-THC	0.005	< LOQ	< LOQ		
THCV	0.006	< LOQ	< LOQ		
THCVA	0.002	0.018	0.18		
CBD	0.002	0.11	1.1		
CBDA	0.002	15	150		
CBDV	0.006	< LOQ	< LOQ		
CBDVA	0.002	0.63	6.3		
CBN	0.003	< LOQ	< LOQ		
CBG	0.0009	0.036	0.36		
CBGA	0.0009	< LOQ	< LOQ		
CBC	0.010	0.053	0.53		



Water Activity

Date/Time Extracted: 10/31/23 14:46 Analysis Method/SOP: 102

Water Activity: 0.57 at 24°C Action Level: 0.65

Moisture

Date/Time Extracted: 10/31/23 14:39 Analysis Method/SOP: 103

Moisture: 11.1 % Action Level: 15%

Potency results are reported on a dry weight basis.

Total THC = delta 9-THC + (THCA * 0.877)

Total CBD = CBD + (CBDA * 0.877)

Total CBG = CBG + (CBGA * 0.878)

LOQ=Limit of Quantification, the lowest measurable concentration of an analyte.

THCA, delta 9-THC, delta 8-THC, CBDA and CBD are accredited by TNI 2016 and ISO 17025



ISO 17025
ACCREDITED
LABORATORY

Eric Wendt
Chief Science Officer - 11/2/2023

These results relate only to the sample included on this report. The report may not be reproduced except in full, without the written permission of Green Leaf Lab.



Runtz

Sample ID:
Test ID: 5023462
Source ID:
Date Sampled: 10/30/23

Matrix: Industrial Hemp
Date Accepted: 10/30/23

Farm 15

Terpene Analysis by GCMS

Date/Time Extracted: 10/31/23 10:05

Analysis Method/SOP: 204

Date/Time Analyzed: 10/31/23 23:52

Analyte	Result	LOD	LOQ	Units	Analyte	Result	LOD	LOQ	Units
(-)-Borneol	< LOQ	0.001	0.003	mg/g	(+)-Borneol	< LOQ	0.001	0.003	mg/g
3-Carene	0.19	0.001	0.003	mg/g	alpha-Bisabolol	1.93	0.001	0.003	mg/g
alpha-Cedrene	< LOQ	0.001	0.003	mg/g	alpha-Humulene	1.45	0.001	0.003	mg/g
Alpha-Phellandrene	0.21	0.001	0.003	mg/g	alpha-Pinene	0.35	0.001	0.003	mg/g
alpha-Terpinene	0.13	0.001	0.003	mg/g	alpha-Thujone	< LOQ	0.001	0.003	mg/g
A-Terpineol	0.24	0.001	0.003	mg/g	beta-Caryophyllene	3.57	0.001	0.003	mg/g
beta-Myrcene	7.3	0.001	0.003	mg/g	beta-Pinene	0.61	0.001	0.003	mg/g
Camphene	< LOQ	0.001	0.003	mg/g	Camphor	< LOQ	0.001	0.003	mg/g
Carvacrol	< LOQ	0.001	0.003	mg/g	Carvone	< LOQ	0.001	0.003	mg/g
Caryophyllene Oxide	0.18	0.001	0.003	mg/g	Cedrol	< LOQ	0.001	0.003	mg/g
Cis-beta-Farnesene	0.2	0.001	0.003	mg/g	Cis-beta-Ocimene	2.08	0.001	0.003	mg/g
cis-Nerolidol	0.42	0.001	0.003	mg/g	Citral	< LOQ	0.001	0.003	mg/g
Citronellol	< LOQ	0.001	0.003	mg/g	Endo-fenchyl alcohol	0.18	0.001	0.003	mg/g
Eucalyptol	< LOQ	0.001	0.003	mg/g	Farnesol 1	< LOQ	0.001	0.003	mg/g
Farnesol 2	0.16	0.001	0.003	mg/g	gamma-Terpinene	0.1	0.001	0.003	mg/g
Geraniol	< LOQ	0.001	0.003	mg/g	Geranyl acetate	< LOQ	0.001	0.003	mg/g
Guaiol	0.7	0.001	0.003	mg/g	Isoborneol	< LOQ	0.001	0.003	mg/g
Isobornyl Acetate	< LOQ	0.001	0.003	mg/g	Isopulegol	< LOQ	0.001	0.003	mg/g
Limonene	2.03	0.001	0.003	mg/g	Linalool	0.4	0.001	0.003	mg/g
Menthol	< LOQ	0.001	0.003	mg/g	Menthone	< LOQ	0.001	0.003	mg/g
Nootkatone	< LOQ	0.001	0.003	mg/g	Octyl Acetate	< LOQ	0.001	0.003	mg/g
p-Cymene	< LOQ	0.001	0.003	mg/g	Phytane	< LOQ	0.001	0.003	mg/g
Piperitone	< LOQ	0.001	0.003	mg/g	Pulegone	< LOQ	0.001	0.003	mg/g
Sabinene	< LOQ	0.001	0.003	mg/g	Sabinene hydrate	< LOQ	0.001	0.003	mg/g
Safranal	< LOQ	0.001	0.003	mg/g	Squalene	< LOQ	0.001	0.003	mg/g
Terpinen-4-ol	0.15	0.001	0.003	mg/g	Terpinolene	4.41	0.001	0.003	mg/g
Thymol	< LOQ	0.001	0.003	mg/g	trans-beta-Farnesene	0.27	0.001	0.003	mg/g
trans-beta-Ocimene	0.13	0.001	0.003	mg/g	trans-Nerolidol	0.48	0.001	0.003	mg/g
Valencene	0.26	0.001	0.003	mg/g	Verbenone	< LOQ	0.001	0.003	mg/g
Total Terpenes	27.95	0.001	0.003	mg/g					

ND - Compound not detected, <LOQ - Results below the Limit of Quantitation
Terpenes are not Accredited by ORELAP to TNI 2016 and ISO 17025



Eric Wendt
Chief Science Officer - 11/2/2023

These results relate only to the sample included on this report. The report may not be reproduced except in full, without the written permission of Green Leaf Lab.

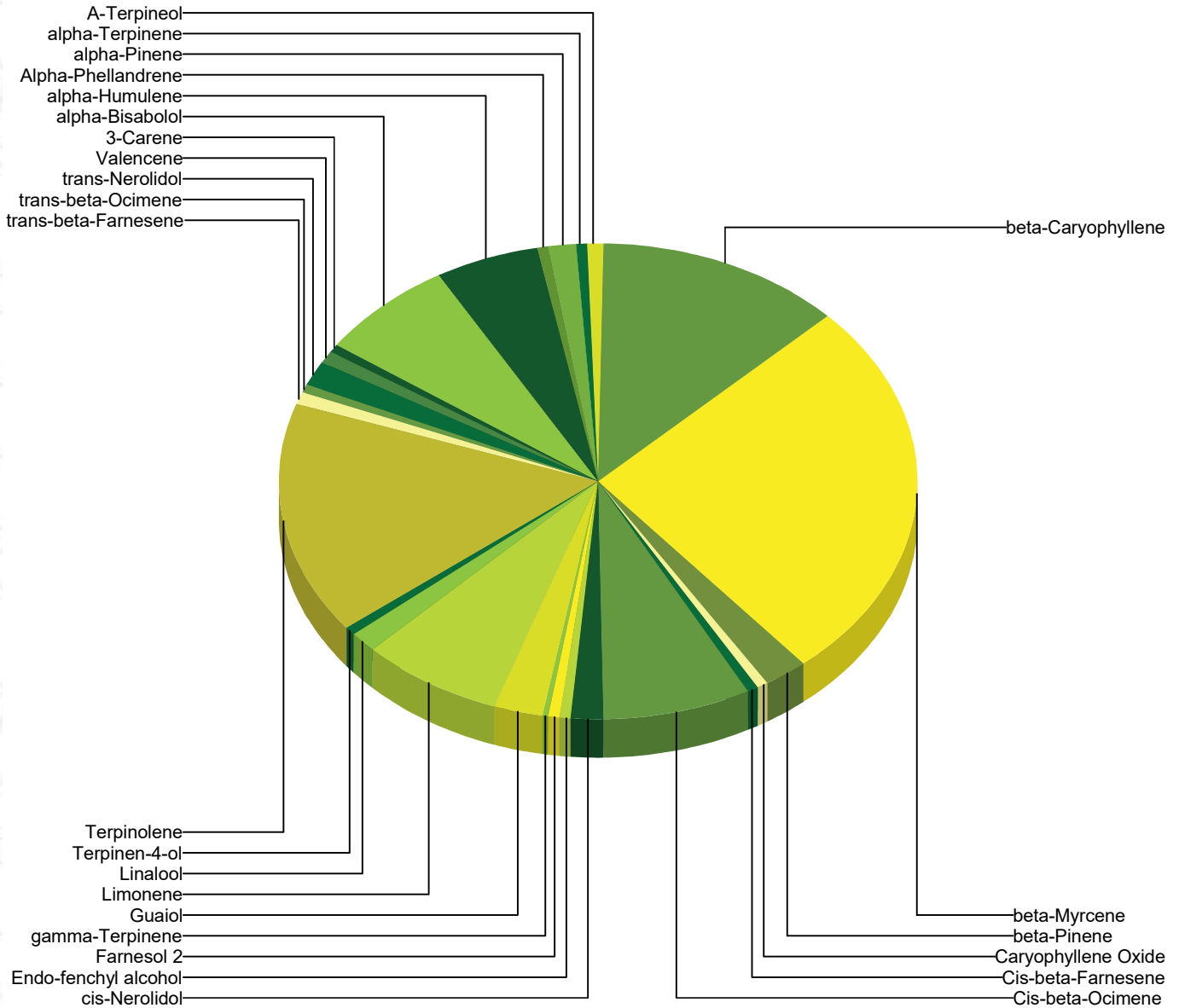


Runtz

Sample ID: Matrix: Industrial Hemp
Test ID: 5023462
Source ID:
Date Sampled: 10/30/23 Date Accepted: 10/30/23

Farm 15

Terpene Profile



Percentage of Total Terpenes Identified



Eric Wendt
Chief Science Officer - 11/2/2023



Runtz

Sample ID: Matrix: Industrial Hemp
Test ID: 5023462
Source ID:
Date Sampled: 10/30/23 Date Accepted: 10/30/23

Farm 15

Pesticide Analysis in ppm

Date/Time Extracted: 10/31/23 15:41
Analysis Method/SOP: 203

Analyte	Result	Action Level	LOD	LOQ	Units	Notes	Analyte	Result	Action Level	LOD	LOQ	Units	Notes
Abamectin	< LOQ	0.5		0.04	ppm		Acephate	< LOQ	0.4		0.04	ppm	
Acequinocyl	< LOQ	2		0.04	ppm		Acetamiprid	< LOQ	0.2		0.04	ppm	
Aldicarb	< LOQ	0.4		0.04	ppm		Azoxystrobin	< LOQ	0.2		0.04	ppm	
Bifenazate	< LOQ	0.2		0.04	ppm		Bifenthrin	< LOQ	0.2		0.04	ppm	
Boscalid	< LOQ	0.4		0.04	ppm		Carbaryl	< LOQ	0.2		0.04	ppm	
Carbofuran	< LOQ	0.2		0.04	ppm		Chlorantraniliprole	< LOQ	0.2		0.04	ppm	
Chlorfenapyr	< LOQ	1		0.1	ppm		Chlorpyrifos	< LOQ	0.2		0.04	ppm	
Clofentezine	< LOQ	0.2		0.04	ppm		Cyfluthrin	< LOQ	1		0.1	ppm	
Cypermethrin	< LOQ	1		0.1	ppm		Daminozide	< LOQ	1		0.04	ppm	
DDVP (Dichlorvos)	< LOQ	1		0.04	ppm		Diazinon	< LOQ	0.2		0.04	ppm	
Dimethoate	< LOQ	0.2		0.04	ppm		Ethoprophos	< LOQ	0.2		0.04	ppm	
Etofenprox	< LOQ	0.4		0.04	ppm		Etoxazole	< LOQ	0.2		0.04	ppm	
Fenoxycarb	< LOQ	0.2		0.04	ppm		Fenpyroximate	< LOQ	0.4		0.04	ppm	
Fipronil	< LOQ	0.4		0.04	ppm		Fonicamid	< LOQ	1		0.04	ppm	
Fludioxonil	< LOQ	0.4		0.04	ppm		Hexythiazox	< LOQ	1		0.04	ppm	
Imazalil	< LOQ	0.2		0.04	ppm		Imidacloprid	< LOQ	0.4		0.04	ppm	
Kresoxim-methyl	< LOQ	0.4		0.04	ppm		Malathion	< LOQ	0.2		0.04	ppm	
Metalaxyl	< LOQ	0.2		0.04	ppm		Methiocarb	< LOQ	0.2		0.04	ppm	
Methomyl	< LOQ	0.4		0.04	ppm		Methyl parathion	< LOQ	0.2		0.04	ppm	
MGK-264	< LOQ	0.2		0.04	ppm		Myclobutanil	< LOQ	0.2		0.04	ppm	
Naled	< LOQ	0.5		0.04	ppm		Oxamyl	< LOQ	1		0.04	ppm	
Paclobutrazol	< LOQ	0.4		0.04	ppm		Permethrins	< LOQ	0.2		0.04	ppm	
Phosmet	< LOQ	0.2		0.04	ppm		Piperonyl butoxide	< LOQ	2		1.0	ppm	
Prallethrin	< LOQ	0.2		0.04	ppm		Propiconazole	< LOQ	0.4		0.04	ppm	
Propoxur	< LOQ	0.2		0.04	ppm		Pyrethrins	< LOQ	1		0.5	ppm	
Pyridaben	< LOQ	0.2		0.04	ppm		Spinosad	< LOQ	0.2		0.04	ppm	
Spiromesifen	< LOQ	0.2		0.04	ppm		Spirotetramat	< LOQ	0.2		0.04	ppm	
Spiroxamine	< LOQ	0.4		0.04	ppm		Tebuconazole	< LOQ	0.4		0.04	ppm	
Thiacloprid	< LOQ	0.2		0.04	ppm		Thiamethoxam	< LOQ	0.2		0.04	ppm	
Trifloxystrobin	< LOQ	0.2		0.04	ppm								

ND - Compound not detected
Results above the Action Level fail state testing requirements and will be highlighted Red.



Eric Wendt
Chief Science Officer - 11/2/2023

These results relate only to the sample included on this report. The report may not be reproduced except in full, without the written permission of Green Leaf Lab.



Runtz

Sample ID: Matrix: Industrial Hemp
Test ID: 5023462
Source ID:
Date Sampled: 10/30/23 Date Accepted: 10/30/23

Farm 15

Mycotoxins by LCMSMS

Date/Time Extracted: 10/31/23 15:41

Analysis Method/SOP: Mycotoxins

Analyte	Result	Action Level	LOD	LOQ	Units
aflatoxin B1	< LOQ	20	10.0	10.0	ug/kg
aflatoxin B2	< LOQ	20	10.0	10.0	ug/kg
aflatoxin G1	< LOQ	20	10.0	10.0	ug/kg
aflatoxin G2	< LOQ	20	10.0	10.0	ug/kg
ochratoxin A	< LOQ	20	10.0	10.0	ug/kg
Total Aflatoxins	< LOQ	20	10.0	10.0	ug/kg

<LOQ - Results below the Limit of Quantitation
Results above the Action Level fail state testing requirements and will be highlighted Red.

Microbials by PCR

Date/Time Extracted: 10/31/23 10:13

Analysis Method/SOP: Microbials

Analyte	Result	Action Level	LOD	LOQ	Units	
Escherichia Coli	ND	1	0.00	0.00	cfu/g	No detection in 1 gram
Salmonella	ND	1	0.00	0.00	cfu/g	No detection in 1 gram

Metals by ICPMS

Date/Time Extracted: 11/01/23 10:59

Analysis Method/SOP: Metals

Analyte	Result	Action Level	LOD	LOQ	Units
Arsenic	< LOQ	0.2	0.03	0.08	ug/g
Cadmium	0.1	0.2	0.02	0.08	ug/g
Lead	< LOQ	0.5	0.01	0.08	ug/g
Mercury	< LOQ	0.1	0.01	0.04	ug/g

<LOQ - Results below the Limit of Quantitation
Results above the Action Level fail state testing requirements and will be highlighted Red.



Eric Wendt
Chief Science Officer - 11/2/2023



Quality Control Potency

Batch: 2344008 - 215-Hemp

Blank(2344008-BLK1)							
Analyte	Result	LOQ	Units	%Recovery Limits	Extracted	Analyzed	Notes
THCA	< LOQ	0.0005	%		10/31/23 10:05	11/01/23 06:07	
delta 9-THC	< LOQ	0.0005	%		10/31/23 10:05	11/01/23 06:07	
delta 8-THC	< LOQ	0.004	%		10/31/23 10:05	11/01/23 06:07	
THCV	< LOQ	0.005	%		10/31/23 10:05	11/01/23 06:07	
THCVA	< LOQ	0.002	%		10/31/23 10:05	11/01/23 06:07	
CBD	< LOQ	0.0005	%		10/31/23 10:05	11/01/23 06:07	
CBDA	< LOQ	0.0005	%		10/31/23 10:05	11/01/23 06:07	
CBDV	< LOQ	0.005	%		10/31/23 10:05	11/01/23 06:07	
CBDVA	< LOQ	0.002	%		10/31/23 10:05	11/01/23 06:07	
CBN	< LOQ	0.003	%		10/31/23 10:05	11/01/23 06:07	
CBG	< LOQ	0.0008	%		10/31/23 10:05	11/01/23 06:07	
CBGA	< LOQ	0.0008	%		10/31/23 10:05	11/01/23 06:07	
CBC	< LOQ	0.009	%		10/31/23 10:05	11/01/23 06:07	

Reference(2344008-SRM1)							
Analyte	% Recovery	LOQ	Units	%Recovery Limits	Extracted	Analyzed	Notes
THCA	95.2	0.0005	%	90-110	10/31/23 10:05	11/01/23 06:41	
delta 9-THC	90.6	0.0005	%	90-110	10/31/23 10:05	11/01/23 06:41	
delta 8-THC	92.6	0.004	%	90-110	10/31/23 10:05	11/01/23 06:41	
CBD	103	0.0005	%	90-110	10/31/23 10:05	11/01/23 06:41	
CBDA	96.9	0.0005	%	90-110	10/31/23 10:05	11/01/23 06:41	

Pesticide Analysis

Batch: 2344020 - 203

Blank(2344020-BLK1)							
Analyte	Result	LOQ	Units	%Recovery Limits	Extracted	Analyzed	Notes
Abamectin	< LOQ	0.04	ppm		10/31/23 15:41	11/01/23 14:38	
DDVP (Dichlorvos)	< LOQ	0.04	ppm		10/31/23 15:41	11/01/23 14:38	
Acephate	< LOQ	0.04	ppm		10/31/23 15:41	11/01/23 14:38	
Acequinocyl	< LOQ	0.04	ppm		10/31/23 15:41	11/01/23 14:38	
Acetamiprid	< LOQ	0.04	ppm		10/31/23 15:41	11/01/23 14:38	
Aldicarb	< LOQ	0.04	ppm		10/31/23 15:41	11/01/23 14:38	
Azoxystrobin	< LOQ	0.04	ppm		10/31/23 15:41	11/01/23 14:38	
Bifenazate	< LOQ	0.04	ppm		10/31/23 15:41	11/01/23 14:38	
Bifenthrin	< LOQ	0.04	ppm		10/31/23 15:41	11/01/23 14:38	
Boscalid	< LOQ	0.04	ppm		10/31/23 15:41	11/01/23 18:12	
Carbaryl	< LOQ	0.04	ppm		10/31/23 15:41	11/01/23 14:38	
Carbofuran	< LOQ	0.04	ppm		10/31/23 15:41	11/01/23 14:38	
Chlorantraniliprole	< LOQ	0.04	ppm		10/31/23 15:41	11/01/23 14:38	



Eric Wendt
Chief Science Officer - 11/2/2023

These results relate only to the sample included on this report. The report may not be reproduced except in full, without the written permission of Green Leaf Lab.



Quality Control Pesticide Analysis (Continued)

Batch: 2344020 - 203 (Continued)

Blank(2344020-BLK1)							
Analyte	Result	LOQ	Units	%Recovery Limits	Extracted	Analyzed	Notes
Chlorfenapyr	< LOQ	0.1	ppm		10/31/23 15:41	11/01/23 18:12	
Chlorpyrifos	< LOQ	0.04	ppm		10/31/23 15:41	11/01/23 14:38	
Clofentezine	< LOQ	0.04	ppm		10/31/23 15:41	11/01/23 14:38	
Cyfluthrin	< LOQ	0.1	ppm		10/31/23 15:41	11/01/23 18:12	
Cypermethrin	< LOQ	0.1	ppm		10/31/23 15:41	11/01/23 18:12	
Daminozide	< LOQ	0.04	ppm		10/31/23 15:41	11/01/23 14:38	
Diazinon	< LOQ	0.04	ppm		10/31/23 15:41	11/01/23 14:38	
Dimethoate	< LOQ	0.04	ppm		10/31/23 15:41	11/01/23 14:38	
Ethoprophos	< LOQ	0.04	ppm		10/31/23 15:41	11/01/23 14:38	
Etofenprox	< LOQ	0.04	ppm		10/31/23 15:41	11/01/23 14:38	
Etoxazole	< LOQ	0.04	ppm		10/31/23 15:41	11/01/23 14:38	
Fenoxycarb	< LOQ	0.04	ppm		10/31/23 15:41	11/01/23 14:38	
Fenpyroximate	< LOQ	0.04	ppm		10/31/23 15:41	11/01/23 14:38	
Fipronil	< LOQ	0.04	ppm		10/31/23 15:41	11/01/23 18:12	
Flonicamid	< LOQ	0.04	ppm		10/31/23 15:41	11/01/23 14:38	
Fludioxonil	< LOQ	0.04	ppm		10/31/23 15:41	11/01/23 18:12	
Hexythiazox	< LOQ	0.04	ppm		10/31/23 15:41	11/01/23 14:38	
Imazalil	< LOQ	0.04	ppm		10/31/23 15:41	11/01/23 14:38	
Imidacloprid	< LOQ	0.04	ppm		10/31/23 15:41	11/01/23 14:38	
Kresoxim-methyl	< LOQ	0.04	ppm		10/31/23 15:41	11/01/23 18:12	
Metalaxyl	< LOQ	0.04	ppm		10/31/23 15:41	11/01/23 14:38	
Malathion	< LOQ	0.04	ppm		10/31/23 15:41	11/01/23 18:12	
Methiocarb	< LOQ	0.04	ppm		10/31/23 15:41	11/01/23 14:38	
Methomyl	< LOQ	0.04	ppm		10/31/23 15:41	11/01/23 14:38	
Myclobutanil	< LOQ	0.04	ppm		10/31/23 15:41	11/01/23 14:38	
Methyl parathion	< LOQ	0.04	ppm		10/31/23 15:41	11/01/23 18:12	
Naled	< LOQ	0.04	ppm		10/31/23 15:41	11/01/23 14:38	
MGK-264	< LOQ	0.04	ppm		10/31/23 15:41	11/01/23 18:12	
Oxamyl	< LOQ	0.04	ppm		10/31/23 15:41	11/01/23 14:38	
Paclobutrazol	< LOQ	0.04	ppm		10/31/23 15:41	11/01/23 14:38	
Phosmet	< LOQ	0.04	ppm		10/31/23 15:41	11/01/23 14:38	
Permethrins	< LOQ	0.04	ppm		10/31/23 15:41	11/01/23 18:12	
Piperonyl butoxide	< LOQ	1.0	ppm		10/31/23 15:41	11/01/23 14:38	
Prallethrin	< LOQ	0.04	ppm		10/31/23 15:41	11/01/23 14:38	
Propiconazole	< LOQ	0.04	ppm		10/31/23 15:41	11/01/23 18:12	
Propoxur	< LOQ	0.04	ppm		10/31/23 15:41	11/01/23 14:38	
Pyrethrins	< LOQ	0.5	ppm		10/31/23 15:41	11/01/23 14:38	
Pyridaben	< LOQ	0.04	ppm		10/31/23 15:41	11/01/23 14:38	



Eric Wendt
Chief Science Officer - 11/2/2023

These results relate only to the sample included on this report. The report may not be reproduced except in full, without the written permission of Green Leaf Lab.



Quality Control Pesticide Analysis (Continued)

Batch: 2344020 - 203 (Continued)

Blank(2344020-BLK1)							
Analyte	Result	LOQ	Units	%Recovery Limits	Extracted	Analyzed	Notes
Spinosad	< LOQ	0.04	ppm		10/31/23 15:41	11/01/23 14:38	
Spiromesifen	< LOQ	0.04	ppm		10/31/23 15:41	11/01/23 14:38	
Spirotetramat	< LOQ	0.04	ppm		10/31/23 15:41	11/01/23 14:38	
Spiroxamine	< LOQ	0.04	ppm		10/31/23 15:41	11/01/23 14:38	
Tebuconazole	< LOQ	0.04	ppm		10/31/23 15:41	11/01/23 14:38	
Thiacloprid	< LOQ	0.04	ppm		10/31/23 15:41	11/01/23 14:38	
Thiamethoxam	< LOQ	0.04	ppm		10/31/23 15:41	11/01/23 14:38	
Trifloxystrobin	< LOQ	0.04	ppm		10/31/23 15:41	11/01/23 14:38	

LCS(2344020-BS1)							
Analyte	% Recovery	LOQ	Units	%Recovery Limits	Extracted	Analyzed	Notes
Abamectin	101	0.04	ppm	50-150	10/31/23 15:41	11/01/23 15:01	
DDVP (Dichlorvos)	89.7	0.04	ppm	60-120	10/31/23 15:41	11/01/23 15:01	
Acephate	98.9	0.04	ppm	60-120	10/31/23 15:41	11/01/23 15:01	
Acequinocyl	100	0.04	ppm	40-160	10/31/23 15:41	11/01/23 15:01	
Acetamiprid	87.5	0.04	ppm	60-120	10/31/23 15:41	11/01/23 15:01	
Aldicarb	87.5	0.04	ppm	60-120	10/31/23 15:41	11/01/23 15:01	
Azoxystrobin	97.8	0.04	ppm	60-120	10/31/23 15:41	11/01/23 15:01	
Bifenazate	90.7	0.04	ppm	60-120	10/31/23 15:41	11/01/23 15:01	
Bifenthrin	89.7	0.04	ppm	50-150	10/31/23 15:41	11/01/23 15:01	
Boscalid	73.9	0.04	ppm	60-120	10/31/23 15:41	11/01/23 18:36	
Carbaryl	88.6	0.04	ppm	60-120	10/31/23 15:41	11/01/23 15:01	
Carbofuran	87.7	0.04	ppm	60-120	10/31/23 15:41	11/01/23 15:01	
Chlorantraniliprole	108	0.04	ppm	60-120	10/31/23 15:41	11/01/23 15:01	
Chlorfenapyr	105	0.1	ppm	60-120	10/31/23 15:41	11/01/23 18:36	
Chlorpyrifos	124	0.04	ppm	60-120	10/31/23 15:41	11/01/23 15:01	BSH
Clofentezine	86.5	0.04	ppm	60-120	10/31/23 15:41	11/01/23 15:01	
Cyfluthrin	77.2	0.1	ppm	50-150	10/31/23 15:41	11/01/23 18:36	
Cypermethrin	73.6	0.1	ppm	50-150	10/31/23 15:41	11/01/23 18:36	
Daminozide	631	0.04	ppm	60-120	10/31/23 15:41	11/01/23 15:01	BSH
Diazinon	92.7	0.04	ppm	60-120	10/31/23 15:41	11/01/23 15:01	
Dimethoate	88.0	0.04	ppm	60-120	10/31/23 15:41	11/01/23 15:01	
Ethoprophos	92.0	0.04	ppm	60-120	10/31/23 15:41	11/01/23 15:01	
Etofenprox	96.3	0.04	ppm	50-150	10/31/23 15:41	11/01/23 15:01	
Etoxazole	106	0.04	ppm	60-120	10/31/23 15:41	11/01/23 15:01	
Fenoxycarb	96.5	0.04	ppm	60-120	10/31/23 15:41	11/01/23 15:01	
Fenpyroximate	109	0.04	ppm	60-120	10/31/23 15:41	11/01/23 15:01	
Fipronil	83.8	0.04	ppm	60-120	10/31/23 15:41	11/01/23 18:36	
Flonicamid	102	0.04	ppm	60-120	10/31/23 15:41	11/01/23 15:01	



Eric Wendt
Chief Science Officer - 11/2/2023

These results relate only to the sample included on this report. The report may not be reproduced except in full, without the written permission of Green Leaf Lab.



Quality Control Pesticide Analysis (Continued)

Batch: 2344020 - 203 (Continued)

LCS(2344020-BS1)							
Analyte	% Recovery	LOQ	Units	%Recovery Limits	Extracted	Analyzed	Notes
Fludioxonil	79.3	0.04	ppm	50-150	10/31/23 15:41	11/01/23 18:36	
Hexythiazox	107	0.04	ppm	60-120	10/31/23 15:41	11/01/23 15:01	
Imazalil	100	0.04	ppm	60-120	10/31/23 15:41	11/01/23 15:01	
Imidacloprid	104	0.04	ppm	60-120	10/31/23 15:41	11/01/23 15:01	
Kresoxim-methyl	81.9	0.04	ppm	60-120	10/31/23 15:41	11/01/23 18:36	
Metalaxyl	88.9	0.04	ppm	60-120	10/31/23 15:41	11/01/23 15:01	
Malathion	86.0	0.04	ppm	60-120	10/31/23 15:41	11/01/23 18:36	
Methiocarb	89.3	0.04	ppm	60-120	10/31/23 15:41	11/01/23 15:01	
Methomyl	91.2	0.04	ppm	60-120	10/31/23 15:41	11/01/23 15:01	
Myclobutanil	96.2	0.04	ppm	60-120	10/31/23 15:41	11/01/23 15:01	
Methyl parathion	91.9	0.04	ppm	50-150	10/31/23 15:41	11/01/23 18:36	
Naled	102	0.04	ppm	50-150	10/31/23 15:41	11/01/23 15:01	
MGK-264	84.0	0.04	ppm	50-150	10/31/23 15:41	11/01/23 18:36	
Oxamyl	79.0	0.04	ppm	60-120	10/31/23 15:41	11/01/23 15:01	
Paclobutrazol	96.0	0.04	ppm	60-120	10/31/23 15:41	11/01/23 15:01	
Phosmet	100	0.04	ppm	50-150	10/31/23 15:41	11/01/23 15:01	
Permethrins	76.2	0.04	ppm	50-150	10/31/23 15:41	11/01/23 18:36	
Piperonyl butoxide	146	1.0	ppm	60-120	10/31/23 15:41	11/01/23 15:01	BSH
Prallethrin	85.4	0.04	ppm	60-120	10/31/23 15:41	11/01/23 15:01	
Propiconazole	90.6	0.04	ppm	60-120	10/31/23 15:41	11/01/23 18:36	
Propoxur	87.6	0.04	ppm	60-120	10/31/23 15:41	11/01/23 15:01	
Pyrethrins	104	0.5	ppm	60-120	10/31/23 15:41	11/01/23 15:01	
Pyridaben	104	0.04	ppm	50-150	10/31/23 15:41	11/01/23 15:01	
Spinosad	90.0	0.04	ppm	50-150	10/31/23 15:41	11/01/23 15:01	
Spiromesifen	86.8	0.04	ppm	60-120	10/31/23 15:41	11/01/23 15:01	
Spirotetramat	101	0.04	ppm	60-120	10/31/23 15:41	11/01/23 15:01	
Spiroxamine	103	0.04	ppm	60-120	10/31/23 15:41	11/01/23 15:01	
Tebuconazole	101	0.04	ppm	60-120	10/31/23 15:41	11/01/23 15:01	
Thiacloprid	91.8	0.04	ppm	60-120	10/31/23 15:41	11/01/23 15:01	
Thiamethoxam	89.2	0.04	ppm	60-120	10/31/23 15:41	11/01/23 15:01	
Trifloxystrobin	94.7	0.04	ppm	60-120	10/31/23 15:41	11/01/23 15:01	

Terpene Analysis

Batch: 2344008 - 215-Hemp

Blank(2344008-BLK2)							
Analyte	Result	LOQ	Units	%Recovery Limits	Extracted	Analyzed	Notes
alpha-Bisabolol	< LOQ	0.00025	%		10/31/23 10:05	10/31/23 22:39	
Camphene	< LOQ	0.00025	%		10/31/23 10:05	10/31/23 22:39	



Eric Wendt
Chief Science Officer - 11/2/2023

These results relate only to the sample included on this report. The report may not be reproduced except in full, without the written permission of Green Leaf Lab.



Quality Control Terpene Analysis (Continued)

Batch: 2344008 - 215-Hemp (Continued)

Blank(2344008-BLK2)							
Analyte	Result	LOQ	Units	%Recovery Limits	Extracted	Analyzed	Notes
Camphor	< LOQ	0.00025	%		10/31/23 10:05	10/31/23 22:39	
3-Carene	< LOQ	0.00025	%		10/31/23 10:05	10/31/23 22:39	
beta-Caryophyllene	< LOQ	0.00025	%		10/31/23 10:05	10/31/23 22:39	
Caryophyllene Oxide	< LOQ	0.00025	%		10/31/23 10:05	10/31/23 22:39	
alpha-Cedrene	< LOQ	0.00025	%		10/31/23 10:05	10/31/23 22:39	
Cedrol	< LOQ	0.00025	%		10/31/23 10:05	10/31/23 22:39	
Endo-fenchyl alcohol	< LOQ	0.00025	%		10/31/23 10:05	10/31/23 22:39	
Eucalyptol	< LOQ	0.00025	%		10/31/23 10:05	10/31/23 22:39	
Geraniol	< LOQ	0.00025	%		10/31/23 10:05	10/31/23 22:39	
Geranyl acetate	< LOQ	0.00025	%		10/31/23 10:05	10/31/23 22:39	
Guaiol	< LOQ	0.00025	%		10/31/23 10:05	10/31/23 22:39	
alpha-Humulene	< LOQ	0.00025	%		10/31/23 10:05	10/31/23 22:39	
Isoborneol	< LOQ	0.00025	%		10/31/23 10:05	10/31/23 22:39	
Isopulegol	< LOQ	0.00025	%		10/31/23 10:05	10/31/23 22:39	
Limonene	< LOQ	0.00025	%		10/31/23 10:05	10/31/23 22:39	
Linalool	< LOQ	0.00025	%		10/31/23 10:05	10/31/23 22:39	
beta-Myrcene	< LOQ	0.00025	%		10/31/23 10:05	10/31/23 22:39	
trans-Nerolidol	< LOQ	0.00025	%		10/31/23 10:05	10/31/23 22:39	
alpha-Pinene	< LOQ	0.00025	%		10/31/23 10:05	10/31/23 22:39	
beta-Pinene	< LOQ	0.00025	%		10/31/23 10:05	10/31/23 22:39	
Pulegone	< LOQ	0.00025	%		10/31/23 10:05	10/31/23 22:39	
Sabinene	< LOQ	0.00025	%		10/31/23 10:05	10/31/23 22:39	
Sabinene hydrate	< LOQ	0.00025	%		10/31/23 10:05	10/31/23 22:39	
gamma-Terpinene	< LOQ	0.00025	%		10/31/23 10:05	10/31/23 22:39	
alpha-Terpinene	< LOQ	0.00025	%		10/31/23 10:05	10/31/23 22:39	
Terpinolene	< LOQ	0.00025	%		10/31/23 10:05	10/31/23 22:39	
Valencene	< LOQ	0.00025	%		10/31/23 10:05	10/31/23 22:39	
Verbenone	< LOQ	0.00025	%		10/31/23 10:05	10/31/23 22:39	
trans-beta-Farnesene	< LOQ	0.00025	%		10/31/23 10:05	10/31/23 22:39	
A-Terpineol	< LOQ	0.00025	%		10/31/23 10:05	10/31/23 22:39	
cis-Nerolidol	< LOQ	0.00025	%		10/31/23 10:05	10/31/23 22:39	
Thymol	< LOQ	0.00025	%		10/31/23 10:05	10/31/23 22:39	
Terpinen-4-ol	< LOQ	0.00025	%		10/31/23 10:05	10/31/23 22:39	
Squalene	< LOQ	0.00025	%		10/31/23 10:05	10/31/23 22:39	
Safranal	< LOQ	0.00025	%		10/31/23 10:05	10/31/23 22:39	
Piperitone	< LOQ	0.00025	%		10/31/23 10:05	10/31/23 22:39	
Phytane	< LOQ	0.00025	%		10/31/23 10:05	10/31/23 22:39	
p-Cymene	< LOQ	0.00025	%		10/31/23 10:05	10/31/23 22:39	



Eric Wendt
Chief Science Officer - 11/2/2023

These results relate only to the sample included on this report. The report may not be reproduced except in full, without the written permission of Green Leaf Lab.



Quality Control Terpene Analysis (Continued)

Batch: 2344008 - 215-Hemp (Continued)

Blank(2344008-BLK2)							
Analyte	Result	LOQ	Units	%Recovery Limits	Extracted	Analyzed	Notes
Octyl Acetate	< LOQ	0.00025	%		10/31/23 10:05	10/31/23 22:39	
Nootkatone	< LOQ	0.00025	%		10/31/23 10:05	10/31/23 22:39	
Menthone	< LOQ	0.00025	%		10/31/23 10:05	10/31/23 22:39	
Menthol	< LOQ	0.00025	%		10/31/23 10:05	10/31/23 22:39	
Isobornyl Acetate	< LOQ	0.00025	%		10/31/23 10:05	10/31/23 22:39	
Farnesol 1	< LOQ	0.00025	%		10/31/23 10:05	10/31/23 22:39	
Carvone	< LOQ	0.00025	%		10/31/23 10:05	10/31/23 22:39	
alpha-Thujone	< LOQ	0.00025	%		10/31/23 10:05	10/31/23 22:39	
Alpha-Phellandrene	< LOQ	0.00025	%		10/31/23 10:05	10/31/23 22:39	
(+)-Borneol	< LOQ	0.00025	%		10/31/23 10:05	10/31/23 22:39	
(-)-Borneol	< LOQ	0.00025	%		10/31/23 10:05	10/31/23 22:39	
Carvacrol	< LOQ	0.00025	%		10/31/23 10:05	10/31/23 22:39	
trans-beta-Ocimene	< LOQ	0.00025	%		10/31/23 10:05	10/31/23 22:39	
Cis-beta-Ocimene	< LOQ	0.00025	%		10/31/23 10:05	10/31/23 22:39	
Citral	< LOQ	0.00025	%		10/31/23 10:05	10/31/23 22:39	
Citronellol	< LOQ	0.00025	%		10/31/23 10:05	10/31/23 22:39	
Farnesol 2	< LOQ	0.00025	%		10/31/23 10:05	10/31/23 22:39	
Cis-beta-Farnesene	< LOQ	0.00025	%		10/31/23 10:05	10/31/23 22:39	

Reference(2344008-SRM2)							
Analyte	% Recovery	LOQ	Units	%Recovery Limits	Extracted	Analyzed	Notes
alpha-Bisabolol	95.3	0.00025	%	70-130	10/31/23 10:05	10/31/23 22:57	
beta-Caryophyllene	77.3	0.00025	%	70-130	10/31/23 10:05	10/31/23 22:57	
alpha-Humulene	74.7	0.00025	%	70-130	10/31/23 10:05	10/31/23 22:57	
Limonene	72.0	0.00025	%	70-130	10/31/23 10:05	10/31/23 22:57	
beta-Myrcene		0.00025	%	70-130	10/31/23 10:05	10/31/23 22:57	

Batch: 2344009 - Microbials

Blank(2344009-BLK1)							
Analyte	Result	LOQ	Units	%Recovery Limits	Extracted	Analyzed	Notes
Salmonella	ND	0.00	cfu/g		10/31/23 10:13	11/01/23 16:55	
Escherichia Coli	ND	0.00	cfu/g		10/31/23 10:13	11/01/23 16:55	

LCS(2344009-BS1)							
Analyte	% Recovery	LOQ	Units	%Recovery Limits	Extracted	Analyzed	Notes
Salmonella	100		cfu/g	99-101	10/31/23 10:13	11/01/23 16:55	
Escherichia Coli	100		cfu/g	99-101	10/31/23 10:13	11/01/23 16:55	

Batch: 2344011 - 103

Blank(2344011-BLK1)							
Analyte	Result	LOQ	Units	%Recovery Limits	Extracted	Analyzed	Notes
Percent Moisture	0.440		%		10/31/23 14:39	10/31/23 14:39	



Eric Wendt
Chief Science Officer - 11/2/2023

These results relate only to the sample included on this report. The report may not be reproduced except in full, without the written permission of Green Leaf Lab.



Quality Control Moisture Content (Continued)

Batch: 2344011 - 103 (Continued)

Blank(2344011-BLK2)							
Analyte	Result	LOQ	Units	%Recovery Limits	Extracted	Analyzed	Notes
Percent Moisture	0.360		%		10/31/23 14:39	10/31/23 14:39	

Reference(2344011-SRM1)							
Analyte	% Recovery	LOQ	Units	%Recovery Limits	Extracted	Analyzed	Notes
Percent Moisture	106		%	80-120	10/31/23 14:39	10/31/23 14:39	

Reference(2344011-SRM2)							
Analyte	% Recovery	LOQ	Units	%Recovery Limits	Extracted	Analyzed	Notes
Percent Moisture	98.6		%	80-120	10/31/23 14:39	10/31/23 14:39	

Batch: 2344020 - 203

Blank(2344020-BLK1)							
Analyte	Result	LOQ	Units	%Recovery Limits	Extracted	Analyzed	Notes
aflatoxin B1	< LOQ	10.0	ug/kg		10/31/23 15:41	11/02/23 03:19	
aflatoxin B2	< LOQ	10.0	ug/kg		10/31/23 15:41	11/02/23 03:19	
aflatoxin G1	< LOQ	10.0	ug/kg		10/31/23 15:41	11/02/23 03:19	
aflatoxin G2	< LOQ	10.0	ug/kg		10/31/23 15:41	11/02/23 03:19	
ochratoxin A	< LOQ	10.0	ug/kg		10/31/23 15:41	11/02/23 03:19	

LCS(2344020-BS1)							
Analyte	% Recovery	LOQ	Units	%Recovery Limits	Extracted	Analyzed	Notes
aflatoxin B1	119	10.0	ug/kg	60-120	10/31/23 15:41	11/02/23 03:30	
aflatoxin B2	119	10.0	ug/kg	60-120	10/31/23 15:41	11/02/23 03:30	
aflatoxin G1	134	10.0	ug/kg	60-120	10/31/23 15:41	11/02/23 03:30	BSH
aflatoxin G2	131	10.0	ug/kg	60-120	10/31/23 15:41	11/02/23 03:30	BSH
ochratoxin A	116	10.0	ug/kg	60-120	10/31/23 15:41	11/02/23 03:30	

Batch: 2344028 - 217

Blank(2344028-BLK1)							
Analyte	Result	LOQ	Units	%Recovery Limits	Extracted	Analyzed	Notes
Cadmium	< LOQ	0.08	ug/g		11/01/23 10:59	11/01/23 14:26	
Lead	< LOQ	0.08	ug/g		11/01/23 10:59	11/01/23 14:26	
Arsenic	< LOQ	0.08	ug/g		11/01/23 10:59	11/01/23 14:26	
Mercury	< LOQ	0.04	ug/g		11/01/23 10:59	11/01/23 14:26	

LCS(2344028-BS1)							
Analyte	% Recovery	LOQ	Units	%Recovery Limits	Extracted	Analyzed	Notes
Cadmium	98.7	0.08	ug/g	80-115	11/01/23 10:59	11/01/23 14:27	
Lead	104	0.08	ug/g	80-115	11/01/23 10:59	11/01/23 14:27	
Arsenic	98.8	0.08	ug/g	80-115	11/01/23 10:59	11/01/23 14:27	
Mercury	102	0.04	ug/g	80-115	11/01/23 10:59	11/01/23 14:27	



Eric Wendt
Chief Science Officer - 11/2/2023

These results relate only to the sample included on this report. The report may not be reproduced except in full, without the written permission of Green Leaf Lab.



Notes and Definitions

Regulatory Compliance samples were collected onsite at facility according to SOP-402 and SOP-403 and following Sampling Plan FN117. Quality Control samples were tested as received. Results do not include uncertainty of measurements. Available upon request.

- ATM Non-cannabis matrix related interference or suppression of Internal standard
- BLI Baseline Interference - Cannabinoid peak interference in chromatographic baseline affecting QC recovery .
- BLK Analyte detected in method blank, but not associated samples.
- BSH Blank Spike High - Blank Spike recovery above method limit. no detections in samples.
- BSL Blank Spike Low - Blank Spike recovery below lower method limit, analyte chromatography reviewed manually for all samples.
- CBD Interference due to co-elution
- CV1 CBD matrix interference on GC Pest chromatography
- CV2 CCV was above acceptance criteria, Non-detect samples are considered acceptable.
- INF CCV was below acceptance criteria, sample still exceeds regulatory limit.
- ISH One or more QC falls outside acceptance criteria. Data entered into LIMS for informational purposes only.
- ISL Internal Standard concentration is above acceptance criteria.
- MSH Internal Standard concentration is below acceptance criteria.
- MSI Matrix Spike High - Matrix Spike recovery above method limits.
- MSL Matrix Spike Interference - Matrix spike source sample contains analyte hit above calibration affecting recovery accuracy in Matrix Spike.
- TPP Matrix Spike Low - Matrix Spike recovery below lower method limit, analyte chromatography reviewed manually for all samples.
- U Internal Standard concentration outside control limit due to matrix interference



Eric Wendt
Chief Science Officer - 11/2/2023

These results relate only to the sample included on this report. The report may not be reproduced except in full, without the written permission of Green Leaf Lab.